

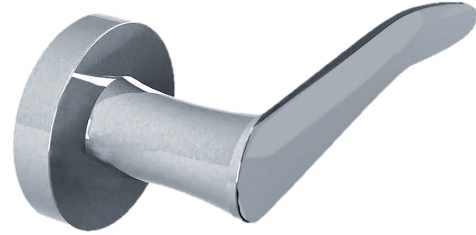


## EMILE ROUND EURO PASSAGE TRIM

### FEATURES

---

- Emile solid brass lever and brass trim
- Brass Emile Round Escutcheon  
53mm diameter
- CSS - Concealed Screw System
- Chassis Sleeve/Lever Assembly for strength and durability
- For Application on Standard European Mortise box with 38mm center to center through holes for mounting
- Standard door thickness 1-1/2" to 2" - other specify



### COLORS/FINISHES

---

- #CP Polished Chrome
- #BN Brushed Nickel
- #SF Special Finish (Inquired)

### WARRANTY

---

- Five-year Limited Warranty for residential use
- One-year Limited Warranty for commercial use

### MATERIAL

---

- Brass

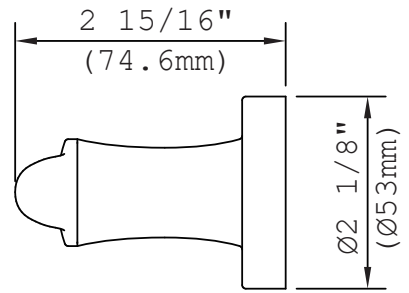
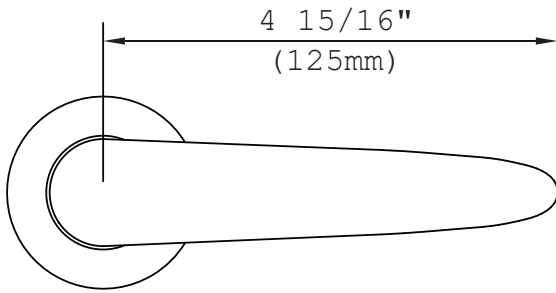
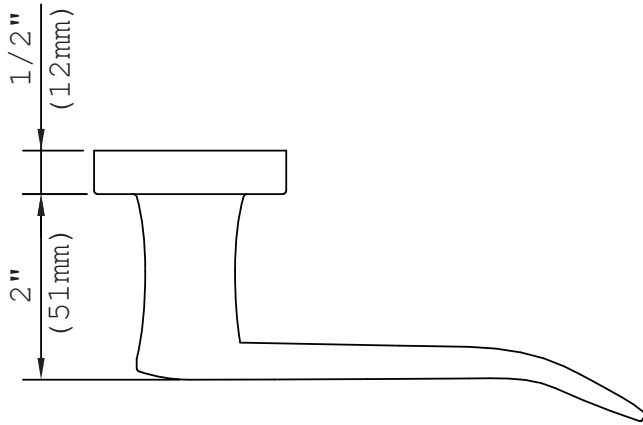
### CODES/STANDARDS

---

- ADA compliant



DIMENSIONS



COPYRIGHT © COOPER AND GRAHAM 2018. ALL RIGHTS RESERVED.